

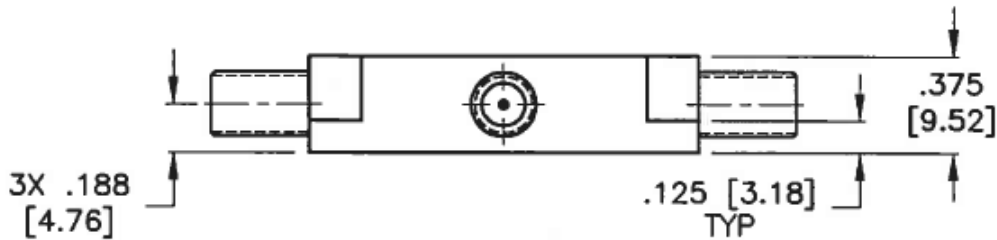
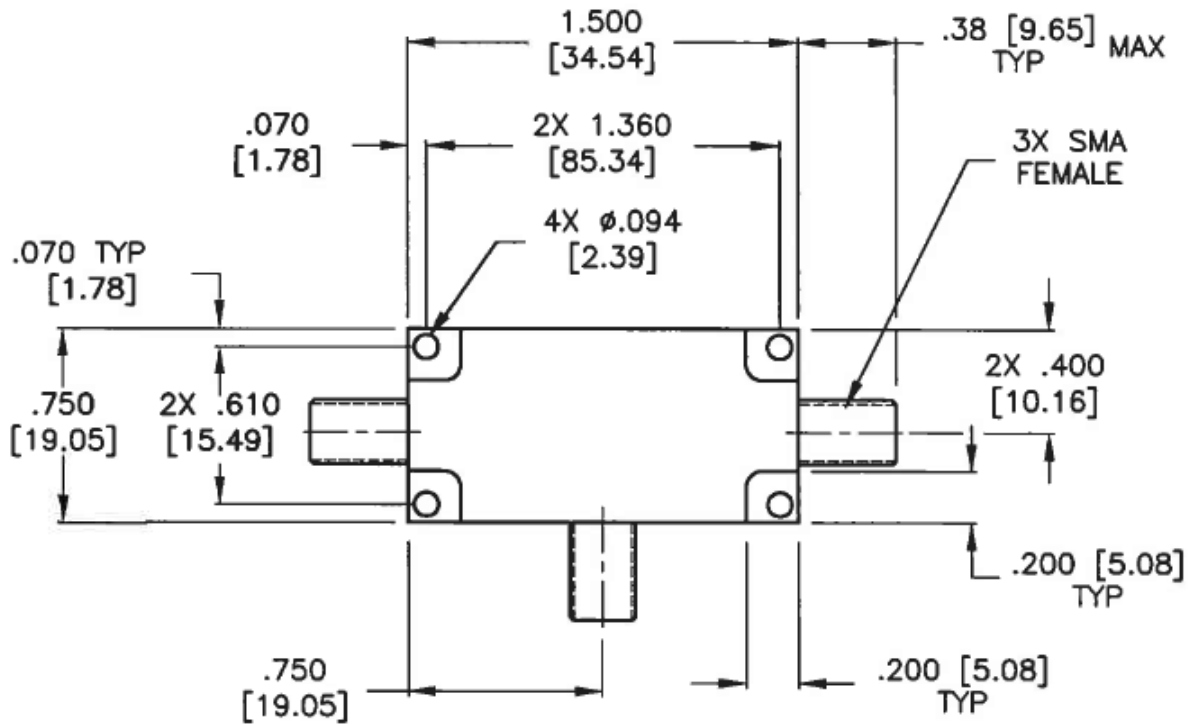
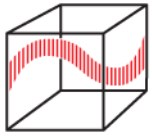
## Ceramic Bandpass Diplexer

### Features/Benefits

- Ceramic Filter
- SMA-F Connectors
- Made in U.S.A.

Parameter	Specification
<b>Channel 1</b>	
Center Frequency (Fo)	1575.42 MHz
Passband	-9.542 dB min from 1565.42 MHz to 1585.42 MHz
VSWR	2:1 max
Insertion Loss	-2 dBa max from 1565.42 MHz to 1585.42 MHz -1 dBc max from 1565.42 MHz to 1585.42 MHz
Rejection	-30 dBc min @ 1400 MHz -22 dBc min @ 1475 MHz -15 dBc min @ 1515 MHz -15 dBc min @ 1635 MHz -22 dBc min @ 1675 MHz
<b>Channel 2</b>	
Center Frequency (Fo)	1227.6 MHz
Passband	-9.542 dB min from 1217.6 MHz to 1237.6 MHz
VSWR	2:1 max
Insertion Loss	-2 dBa max from 1217.6 MHz to 1237.6 MHz -1 dBc max from 1217.6 MHz to 1237.6 MHz
Rejection	-25 dBc min @ 1127 MHz -15 dBc min @ 1167 MHz -15 dBc min @ 1287 MHz -25 dBc min @ 1327 MHz -30 dBc min @ 1400 MHz
Package Outline	IMC Document Number 618772
Temperature, Operating	-40°C to +95°C
Temperature, Storage	-55°C to +125°C
Mechanical Dimensions	1.500 x 0.750 x 0.375 inches [ 34.54 x 19.05 x 9.52 mm] (L X W X H)

This document contains IMC proprietary information and is to be used only for the purposes for which it has been supplied and is not to be duplicated or disclosed in whole or in part without written permission from a duly authorized representative of IMC.

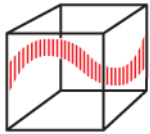


UNLESS OTHERWISE SPECIFIED  
DIMENSIONS ARE IN INCHES.

TOLERANCES ARE:

INCHES	MILLIMETERS
.XX ± .02	[X.X] ± .5
.XXX ± .010	[X.XX] ± .25
.XXXX ± .0020	[X.XXX] ± .051

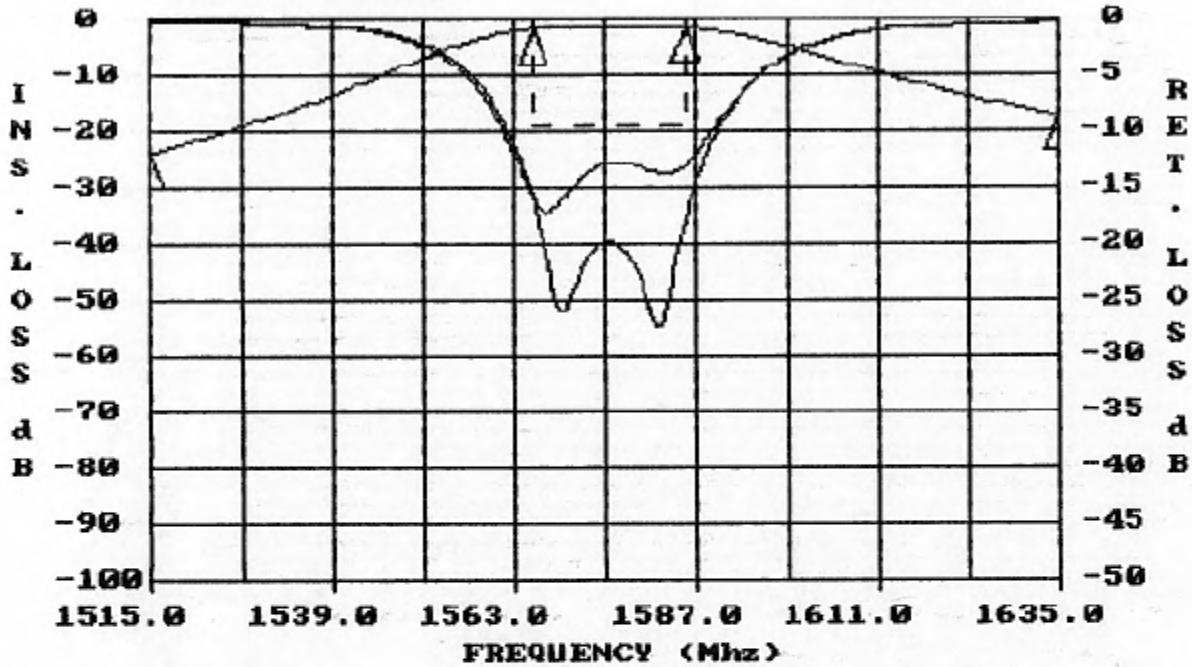
This document contains IMC proprietary information and is to be used only for the purposes for which it has been supplied and is not to be duplicated or disclosed in whole or in part without written permission from a duly authorized representative of IMC.



## INTEGRATED MICROWAVE CO

IMC FSCM 60656

25 °C



IMC P/N 925788CH1

REVISION

TESTED BY 9668

03-10-1999

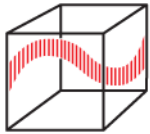
11:13:41

S/N

FREQUENCY (MHZ)	VALUE	SPEC	COMMENTS
1515	-22.5 dBc	-15 dBc MIN	
1635	-15.7 dBc	-15 dBc MIN	
1565.4- 1585.42	-1.84 dbA	-2 dbA MAX	
1565.4- 1585.42	-.369 dbC	-1 dbC MAX	

FREQUENCY (MHZ)	SPEC	COMMENTS
1565.4- 1585.42	2 :1 MAX	(S11) - VSWR
1565.4- 1585.42	2 :1 MAX	(S22) - VSWR

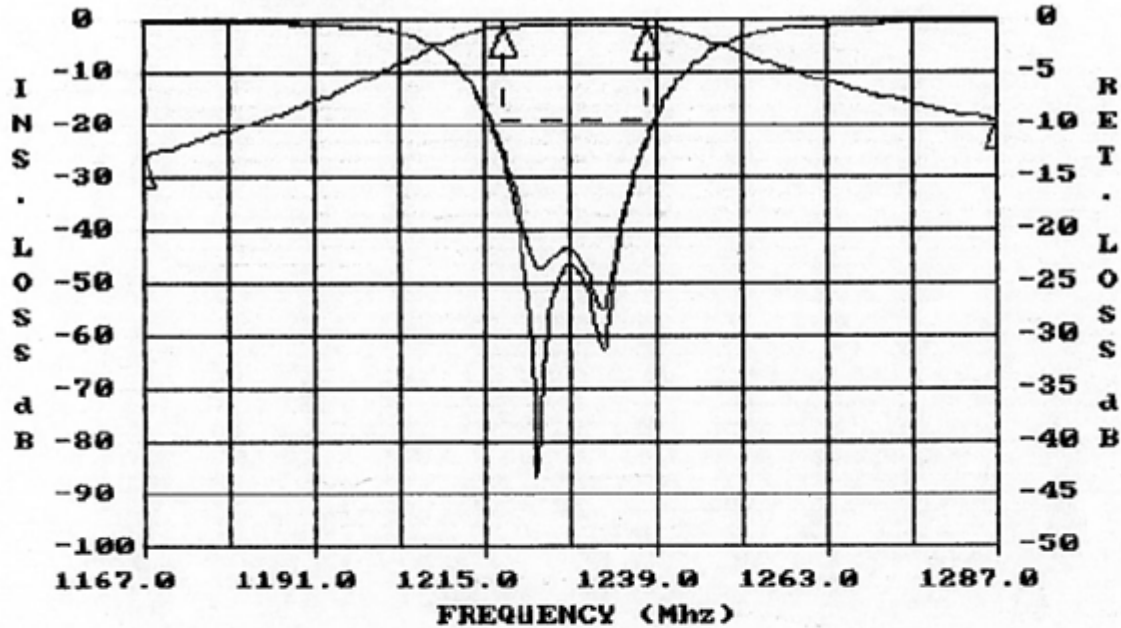
This document contains IMC proprietary information and is to be used only for the purposes for which it has been supplied and is not to be duplicated or disclosed in whole or in part without written permission from a duly authorized representative of IMC.



## INTEGRATED MICROWAVE CO

IMC FSCM 60656

25 °C



IMC P/N 925788CH2

REVISION

TESTED BY 9668

03-10-1999

11:19:03

S/N

FREQUENCY (MHZ)	VALUE	SPEC	COMMENTS
1167	-25.1 dBc	-15 dBc MIN	
1287	-18.3 dBc	-15 dBc MIN	
1217.6- 1237.6	-1.34 dbA	-2 dbA MAX	
1217.6- 1237.6	-.513 dBc	-1 dBc MAX	

FREQUENCY (MHZ)	VALUE	SPEC	COMMENTS
1127	-37.7 dBc	-25 dBc MIN	
1327	-25.6 dBc	-25 dBc MIN	
1400	-34.3 dBc	-30 dBc MIN	

FREQUENCY (MHZ)	SPEC	COMMENTS
1217.6- 1237.6	2 :1 MAX	(S11) - VSWR
1217.6- 1237.6	2 :1 MAX	(S22) - VSWR

This document contains IMC proprietary information and is to be used only for the purposes for which it has been supplied and is not to be duplicated or disclosed in whole or in part without written permission from a duly authorized representative of IMC.