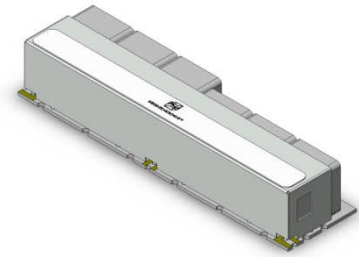


GPS (L1, L2 band) Diplexer – 6 Pole

Features/Benefits

- High Q ceramic
- Low cost
- Very low loss
- Surface mount
- RoHS-compliant version available



Parameter	Specification	
	L1 Channel (CH 2)	L2 Channel (CH 1)
Center Frequency (Fo)	1575.4 MHz (L1 band)	1227.6 MHz (L2 band)
Insertion Loss	< 0.5 dBa over PB	< 0.5 dBa over PB
Passband (PB)	1575.4 ± 10 MHz, min	1227.6 ± 10 MHz, min
Return Loss	14 dB over PB	14 dB over PB
Rejection	-30 dBc min @ 1050 MHz -20 dBc min @ 1401 MHz -15 dBc min @ 1710 MHz	-30 dBc min @ 1050 MHz -25 dBc min @ 1262 MHz -20 dBc min @ 1401 MHz -15 dBc min @ 1710 MHz
Group Delay Tracking	4 ns over PB	4 ns over PB
Package Outline	IMC Document Number 622293	
Temperature, Operating	-20 C to +70 C	
Temperature, Storage	-55 C to +125 C	
Temperature, Soldering	+215 C MAX (use convective reflow)	
Mechanical Dimensions	2.970 x 0.800 x 0.530 inches [75.44 x 20.32 x 13.46 mm]	

