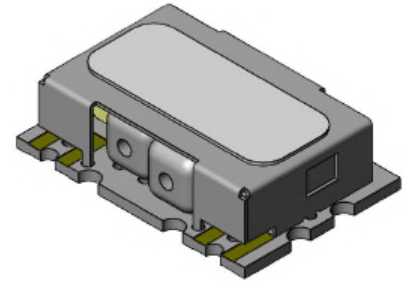


GPS Ceramic Diplexer Bandpass Filter

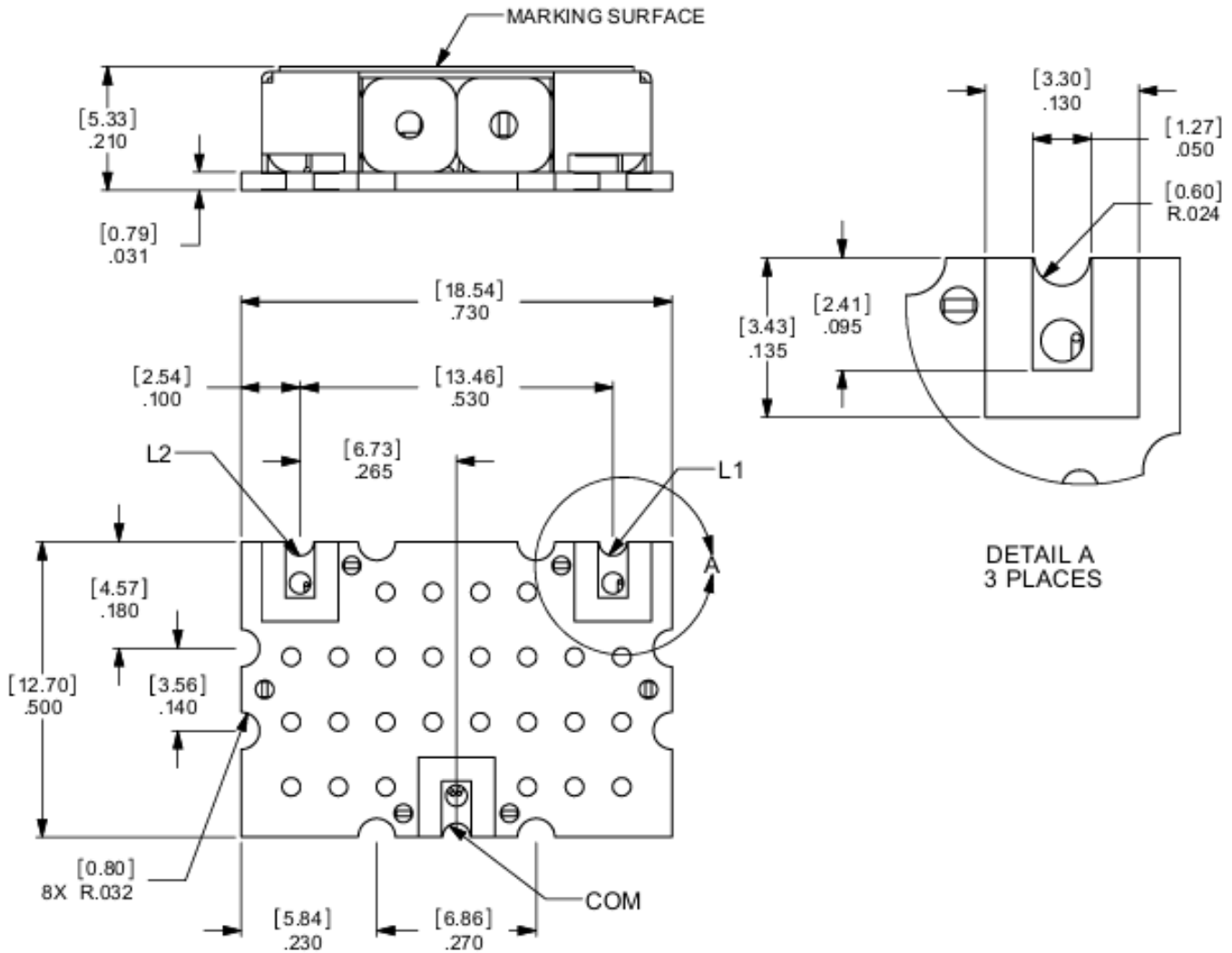
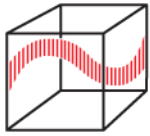
Features/Benefits

- Ceramic Filter
- Low Cost
- Low Profile
- Made in U.S.A.



Parameter	Specification
Ch 1	
Center Frequency (Fo)	1227.6 MHz
Passband	-3 dB from 1212.6 MHz to 1242.6 MHz
Return Loss	15 dB min from 1212.6 MHz to 1242.6 MHz
Insertion Loss	1.1 dBa min from 1212.6 MHz to 1242.6 MHz
Group Delay Variation	6 ns min from 1207.6 MHz to 1247.6 MHz
Rejection	30 dB min from 1564.42 MHz to 1586.42 MHz
Ch 2	
Center Frequency (Fo)	1575.42 MHz
Passband	-3 dB from 1560.42 MHz to 1590.42 MHz
Return Loss	15 dB min from 1560.42 MHz to 1590.42 MHz
Insertion Loss	1.1 dBa min from 1560.42 MHz to 1590.42 MHz
Group Delay Variation	6 ns min from 1565.42 MHz to 1585.42 MHz
Rejection	25 dB min from 1216.6 MHz to 1238.6 MHz
Package Outline	IMC Document Number 622789
Temperature, Operating	-40°C to +105°C
Temperature, Storage	-55°C to +125°C
Temperature, Soldering	+215°C MAX (use convective reflow)
Mechanical Dimensions	0.730 x 0.500 x 0.210 inches [18.54 x 12.70 x 5.33 mm] (L X W X H)

This document contains IMC proprietary information and is to be used only for the purposes for which it has been supplied and is not to be duplicated or disclosed in whole or in part without written permission from a duly authorized representative of IMC.



UNLESS OTHERWISE SPECIFIED
DIMENSIONS ARE IN INCHES.

TOLERANCES ARE:

INCHES	MILLIMETERS
.XX ± .02	[X.X] ± .5
.XXX ± .020	[X.XX] ± .51
.XXXX ± .0020	[X.XXX] ± .051

This document contains IMC proprietary information and is to be used only for the purposes for which it has been supplied and is not to be duplicated or disclosed in whole or in part without written permission from a duly authorized representative of IMC.