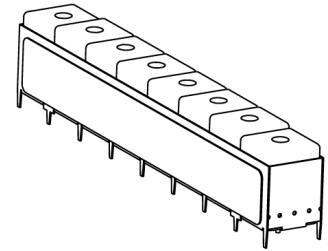


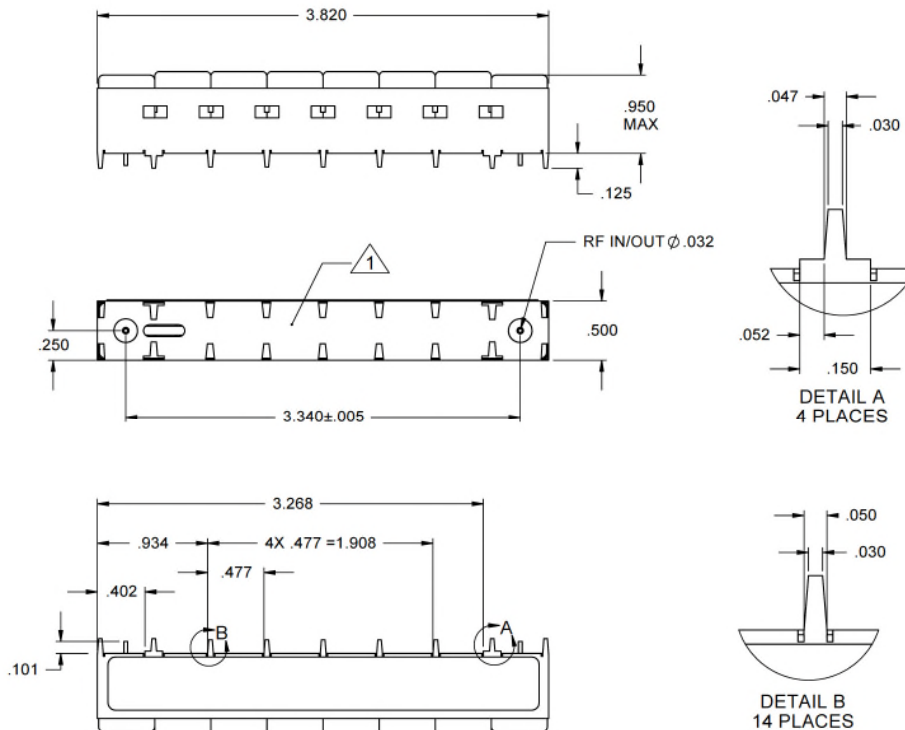
872.5 MHz Elliptic Ceramic Bandpass Filter



Features/Benefits

- Elliptic Ceramic Bandpass Filter
- Low Cost
- RoHS-compliant
- Made in U.S.A.

Parameter	Specification
Center Frequency (Fo)	872.5 MHz
Insertion Loss	-4 dBa max from 865 MHz to 880 MHz
Return Loss	-13 dB from 865 MHz to 880 MHz
Rejection	-28 dBc min @ 855 MHz -25 dBc min @ 890 MHz -30 dBc min @ 887 MHz -25 dBc min across 892 MHz to 1910 MHz
Package Outline	IMC Document Number 618974
Temperature, Operating	-40°C to +85°C
Temperature, Storage	-55°C to +125°C
Temperature, Soldering	Wave solder only
Mechanical Dimensions	3.820 x 0.500 x 0.950 MAX inches



NOTES:

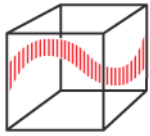
1. UNDIMENSIONED FEATURES ARE SUBJECT TO VARIATION.

UNLESS OTHERWISE SPECIFIED DIMENSIONS ARE IN INCHES.

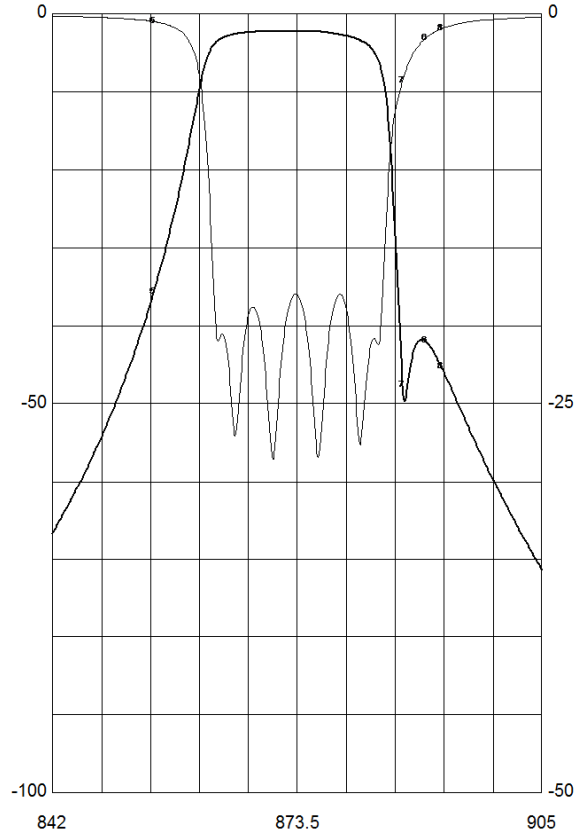
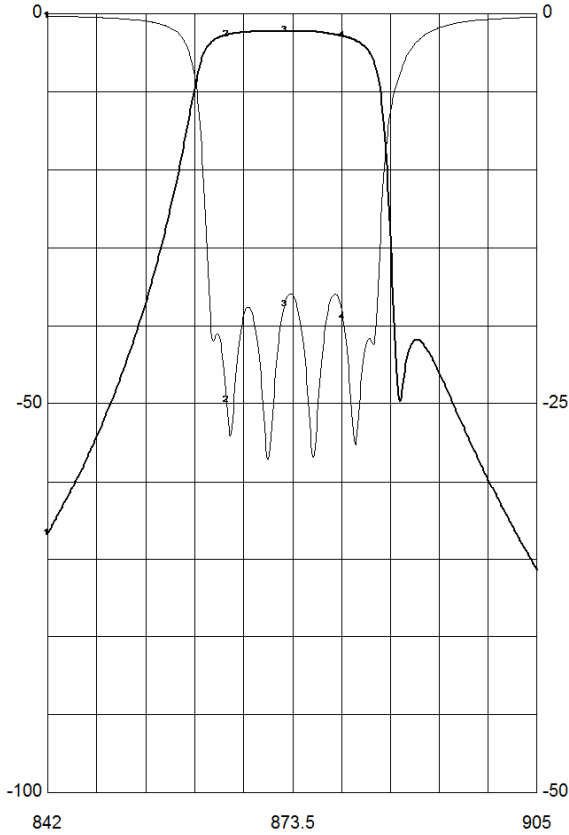
TOLERANCES ARE:

INCHES	MILLIMETERS
.XX ± .02	[X.X] ± .5
.XXX ± .020	[X.XX] ± .51
.XXXX ± .0020	[X.XXX] ± .051

This document contains IMC proprietary information and is to be used only for the purposes for which it has been supplied and is not to be duplicated or disclosed in whole or in part without written permission from a duly authorized representative of IMC.



Eagleware Jul 05 11:37:56 2016 942227A.SCH RF(50)



DB[S21]		DB[S11]		DB[S21]		DB[S22]	
842	865	872.5	880	855	890	887	892
-66.7295	-2.66325	-2.17532	-2.84004	-35.7275	-41.986	-47.6812	-45.2061
-0.120467	-24.8348	-18.6094	-19.4885	-0.475892	-1.53261	-4.2688	-0.938952

This document contains IMC proprietary information and is to be used only for the purposes for which it has been supplied and is not to be duplicated or disclosed in whole or in part without written permission from a duly authorized representative of IMC.