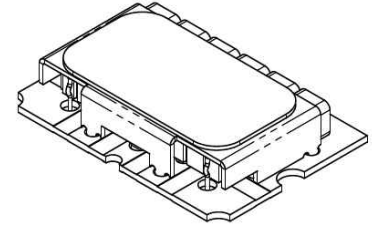


L1/L2 Ceramic Diplexer Bandpass

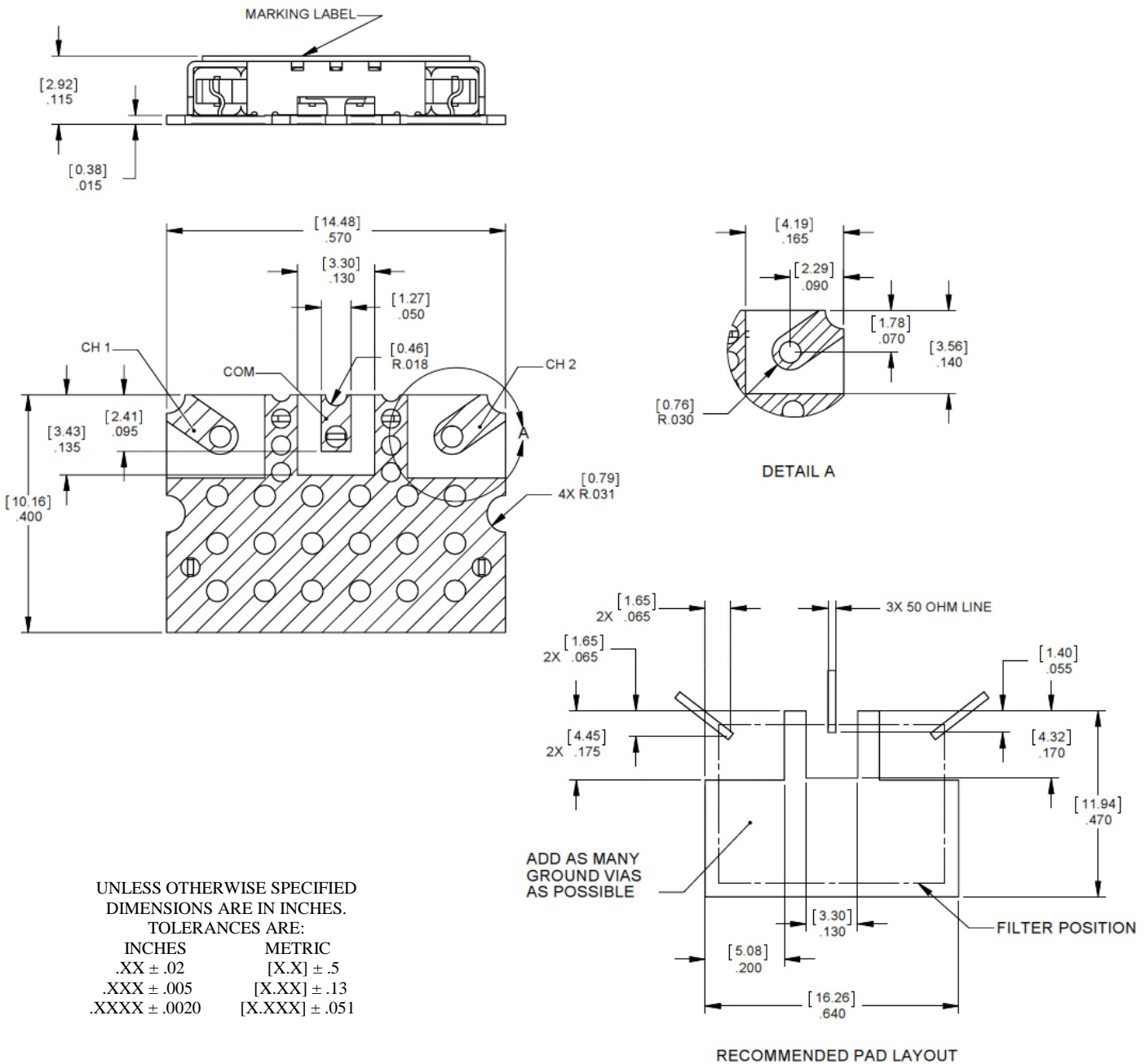
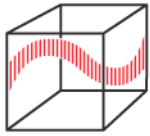
Features/Benefits

- Ultra small profile
- Low Cost
- 2mm resonators
- SMT



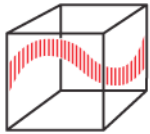
Parameter	Specification
Channel 1 (L2)	
Center Frequency (Fo)	1227.6 MHz
0.5 dBc Passband (PB)	16 MHz, min
Insertion Loss	-2.1 dBa max over passband
Return Loss	-14 dB across passband
Rejection	-40 dBc min @ 1077.6 MHz -35 dBc min @ 1377.6 MHz -48 dBc min from 1567.4 MHz to 1583.4 MHz
Channel 2 (L1)	
Center Frequency (Fo)	1575.4 MHz
0.5 dBc Passband (PB)	16 MHz MHz, min
Insertion Loss	-2.4 dBa max over passband
Return Loss	-14 dB across passband
Rejection	-35 dBc min @ 1425.4 MHz -30 dBc min @ 1725.4 MHz -50 dBc min from 1219.6 MHz to 1235.6 MHz
Other Specifications	
Package Outline	IMC Document Number 622920
Temperature, Operating	-40°C to +85°C
Temperature, Storage	-55°C to +125°C
Temperature, Soldering	+215°C MAX (use convective reflow)
Power Capability	8 Watts CW, 20 Watts Peak
Mechanical Dimensions	0.570 x 0.400 x 0.115 inches [14.48 x 10.16 x 2.92 mm]

This document contains IMC proprietary information and is to be used only for the purposes for which it has been supplied and is not to be duplicated or disclosed in whole or in part without written permission from a duly authorized representative of IMC.



UNLESS OTHERWISE SPECIFIED
 DIMENSIONS ARE IN INCHES.
 TOLERANCES ARE:

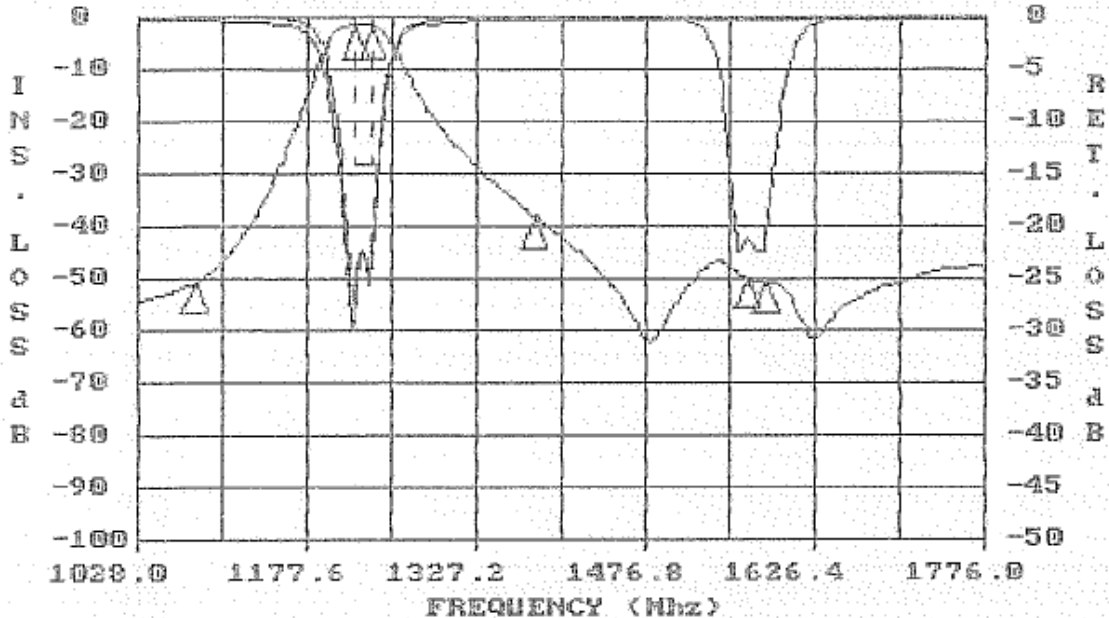
INCHES	METRIC
.XX ± .02	[X.X] ± .5
.XXX ± .005	[X.XX] ± .13
.XXXX ± .0020	[X.XXX] ± .051



INTEGRATED MICROWAVE CO

IMC FSCM 60656

25 °C



IMC P/N 943452

REVISION

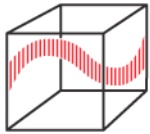
TESTED BY 9668

07-21-2014

13:53:58

S/N

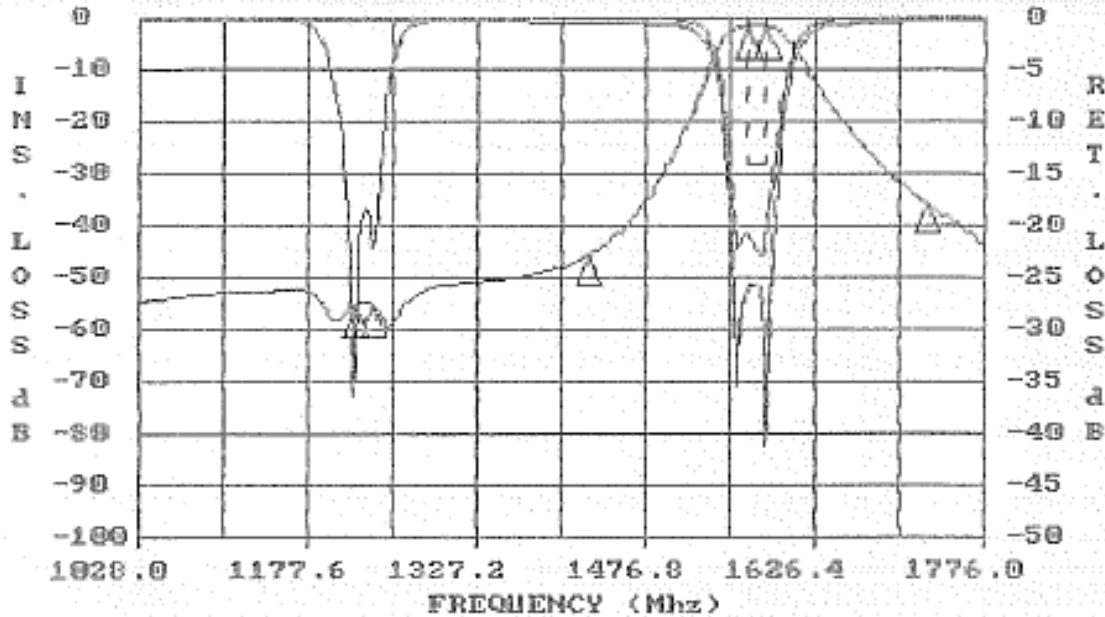
FREQUENCY (MHZ)	VALUE	SPEC	COMMENTS
1077.6	-49.4 dbC	-40 dbC MIN	
1377.6	-36.1 dbC	-35 dbC MIN	
1219.6- 1235.6	-1.88 dbA	-2.1 dbA MAX	
1219.6- 1235.6	-.164 dbC	-.5 dbC MAX	
1567.4- 1583.4	-48.2 dbC	-48 dbC MIN	
	VALUE	SPEC	COMMENTS
	49.12 MHZ	14 MHZ MIN	-2dbC Width
	1223.33MHZ	1127.6 MIN	Center Freq.
	1223.33MHZ	1327.6 MAX	Center Freq.
FREQUENCY (MHZ)	VALUE	SPEC	COMMENTS
1219.6- 1235.6	-21.7	-14 db MIN	(S11) - VSWR
1219.6- 1235.6	-22.3	-14 db MIN	(S22) - VSWR



INTEGRATED MICROWAVE CO

IMC FSCM 60656

25 °C



IMC P/N 943452

REVISION

TESTED BY 9668

07-21-2014

13:51:09

S/N

FREQUENCY (MHZ)	VALUE	SPEC	COMMENTS
1425.4	-44.0 dbC	-35 dbC MIN	
1725.4	-33.6 dbC	-30 dbC MIN	
1567.4- 1583.4	-1.92 dbA	-2.4 dbA MAX	
1567.4- 1583.4	-.085 dbC	-.5 dbC MAX	
1219.6- 1235.6	-52.7 dbC	-50 dbC MIN	
	VALUE	SPEC	COMMENTS
	55.81 MHZ	14 MHZ MIN	-2dbC Width
	1573.30MHZ	1475.4 MIN	Center Freq.
	1573.30MHZ	1675.4 MAX	Center Freq.
FREQUENCY (MHZ)	VALUE	SPEC	COMMENTS
1567.4- 1583.4	-20.8	-14 db MIN	(S11) - VSWR
1567.4- 1583.4	-25.5	-14 db MIN	(S22) - VSWR