

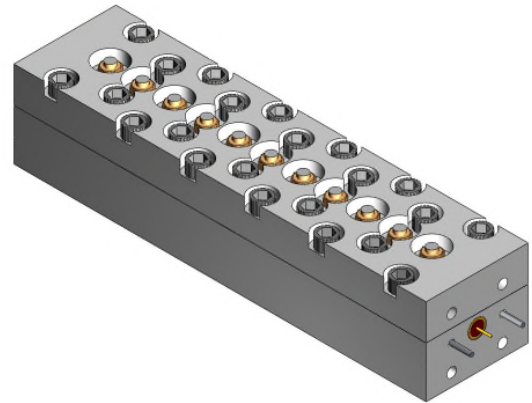
N261 5G Band 28 GHz Filter Kit

Features/Benefits

- 4 bandpass filters consisting of customer's choice from 4 different bandwidths
- SMT waveguide
- No mismatch during installation
- Compatible with SMA or K field replaceable connectors
- High Q
- Made in U.S.A.

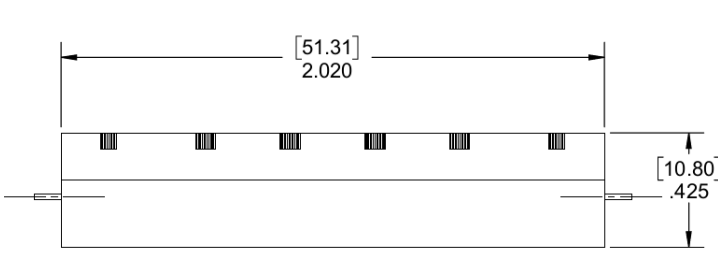
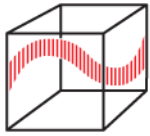
Available Options

- Hot\Cold\Ambient temperature testing with plots
- Weather sealing for outdoor environments

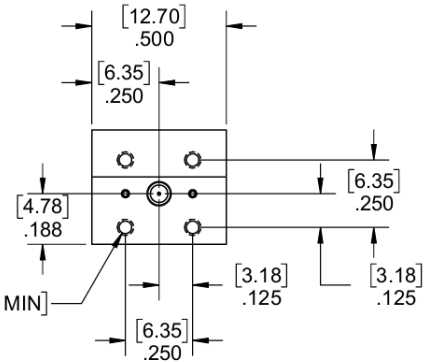


| Bandwidth | IMC Part Number |
|------------------------|--|
| 50 MHz | 943440 |
| 100 MHz | 943441 |
| 200 MHz | 943442 |
| 400 MHz | 943443 |
| Parameter | Specification |
| Center Frequency (Fo) | 28 GHz (or anywhere within 27.5 GHz to 28.5 GHz upon customer request) |
| Package Outline | IMC Document Number 623441 |
| Temperature, Operating | -20°C to +70°C |
| Temperature, Storage | -55°C to +125°C |
| Mechanical Dimensions | 2.020 x 0.500 x 0.425 inches [51.31 x 12.70 x 10.80 mm] (L X W X H) |

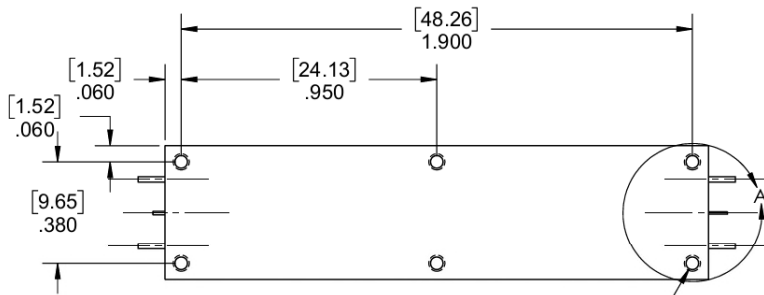
This document contains IMC proprietary information and is to be used only for the purposes for which it has been supplied and is not to be duplicated or disclosed in whole or in part without written permission from a duly authorized representative of IMC.



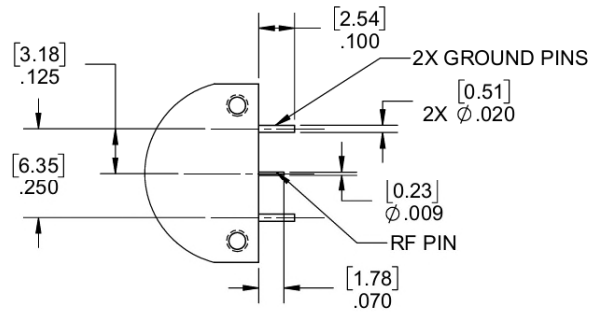
4X 0-80 UNF ∇ .070 MIN [1.78 MIN]



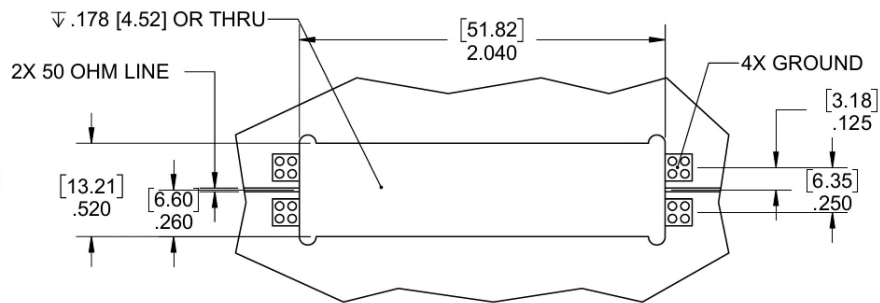
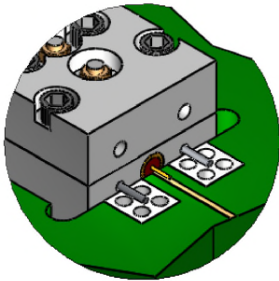
BOTH SIDES



6X 0-80 UNF ∇ .120 MIN [3.05 MIN]



DETAIL A
2 PLACES



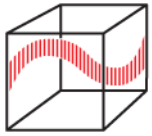
RECOMMENDED PAD LAYOUT

UNLESS OTHERWISE SPECIFIED
DIMENSIONS ARE IN INCHES.

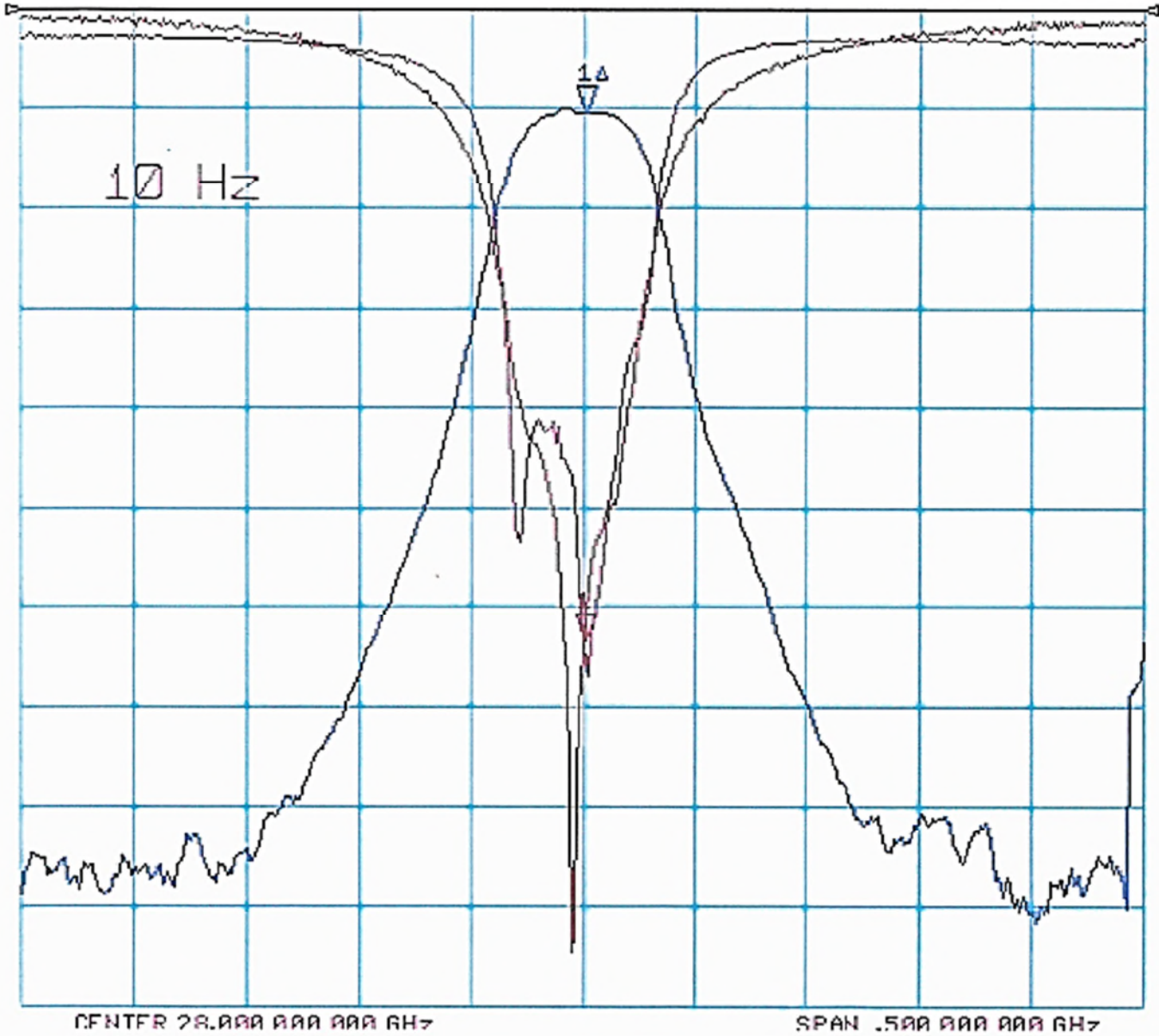
TOLERANCES ARE:

| INCHES | MILLIMETERS |
|---------------|----------------|
| .XX ± .02 | [X.X] ± .5 |
| .XXX ± .010 | [X.XX] ± .25 |
| .XXXX ± .0020 | [X.XXX] ± .051 |

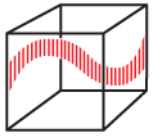
This document contains IMC proprietary information and is to be used only for the purposes for which it has been supplied and is not to be duplicated or disclosed in whole or in part without written permission from a duly authorized representative of IMC.



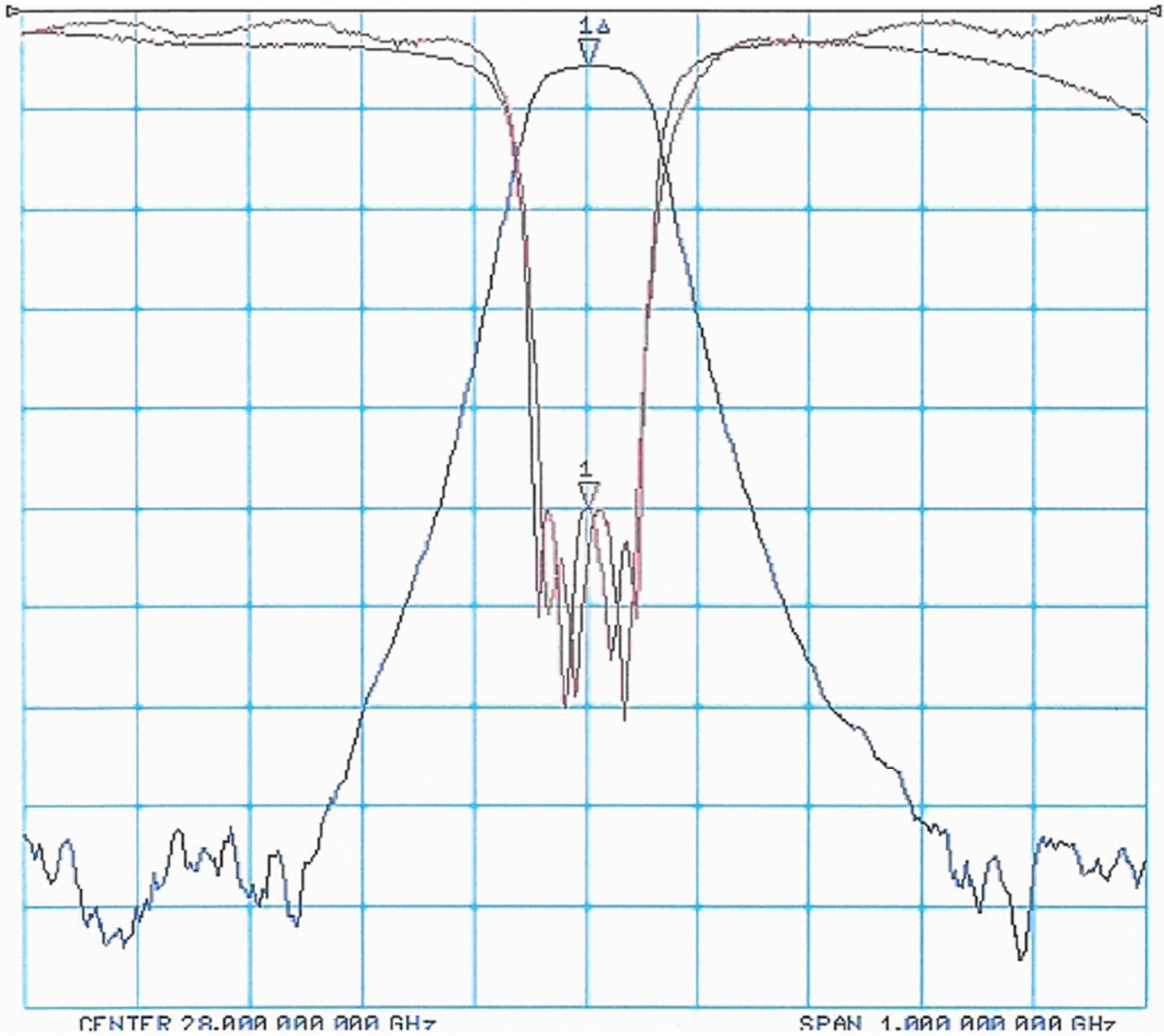
943440



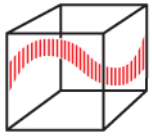
This document contains IMC proprietary information and is to be used only for the purposes for which it has been supplied and is not to be duplicated or disclosed in whole or in part without written permission from a duly authorized representative of IMC.



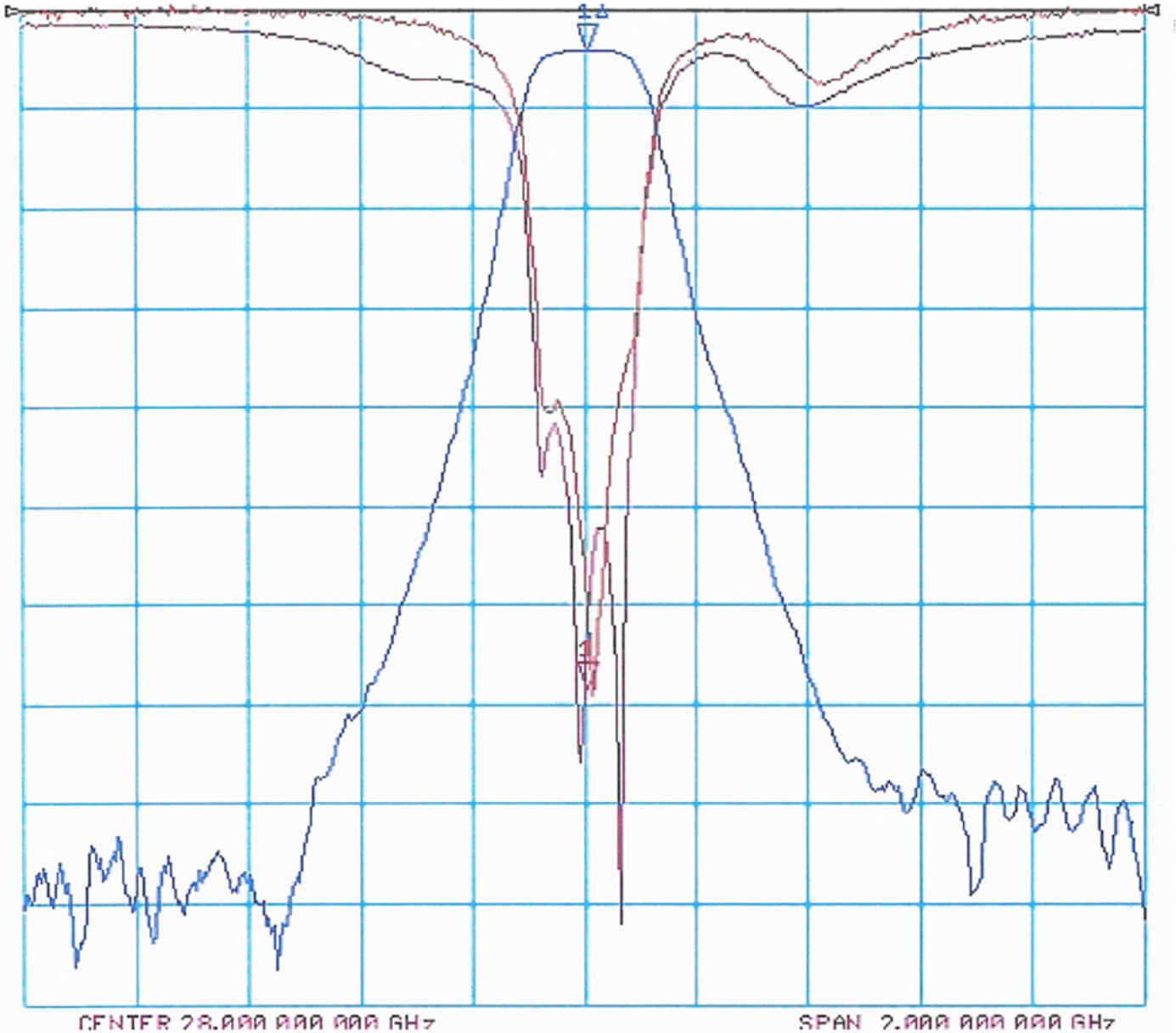
943441



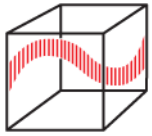
This document contains IMC proprietary information and is to be used only for the purposes for which it has been supplied and is not to be duplicated or disclosed in whole or in part without written permission from a duly authorized representative of IMC.



943442



This document contains IMC proprietary information and is to be used only for the purposes for which it has been supplied and is not to be duplicated or disclosed in whole or in part without written permission from a duly authorized representative of IMC.

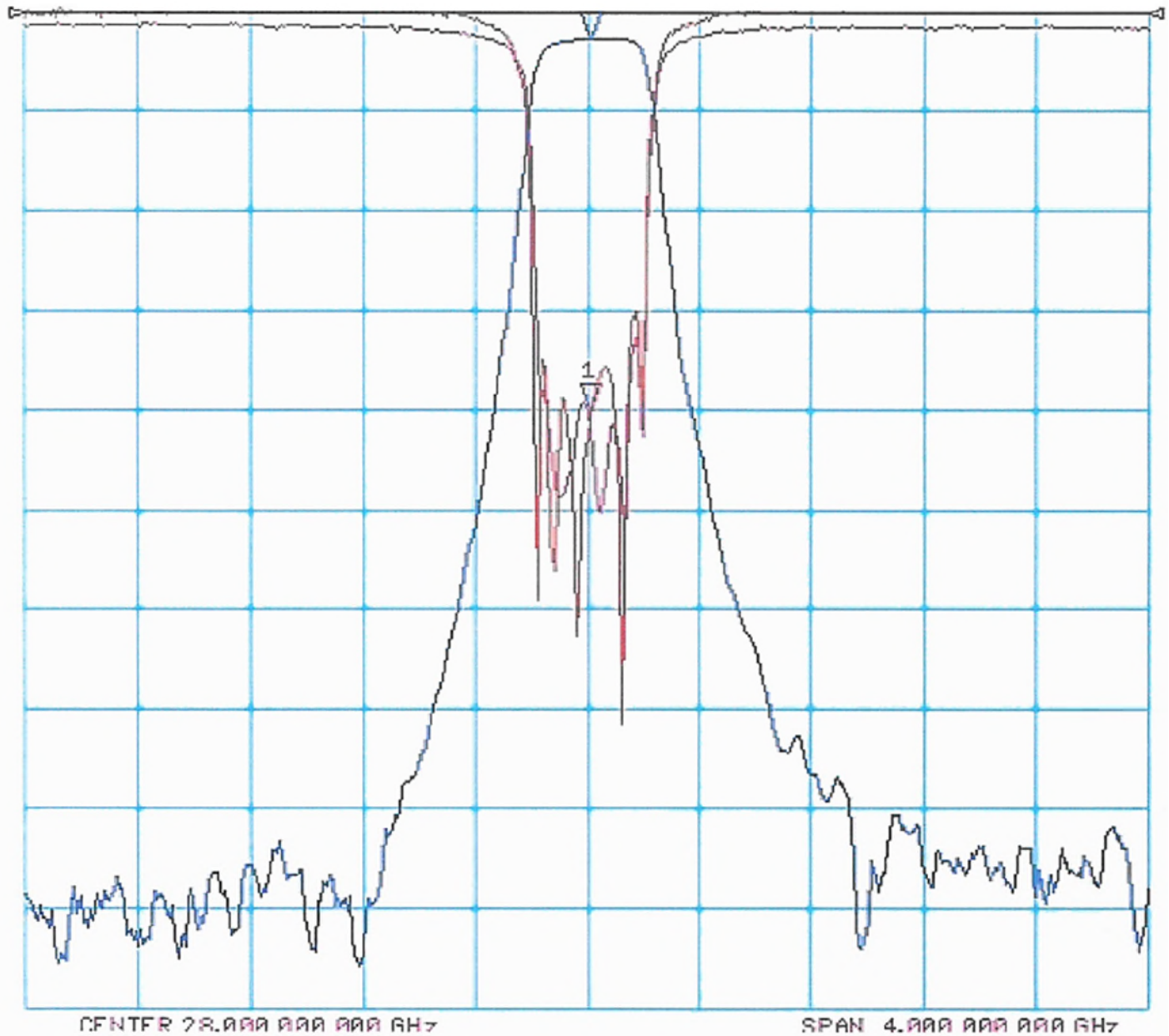


INTEGRATED MICROWAVE®

Data Sheet

IMC P/N: N261 Kit

943443



This document contains IMC proprietary information and is to be used only for the purposes for which it has been supplied and is not to be duplicated or disclosed in whole or in part without written permission from a duly authorized representative of IMC.

11353 Sorrento Valley Road, San Diego, CA 92121-1303 USA • TEL: 858-259-2600
EMAIL: sales@imcsd.com • WEB: www.imcsd.com © 2010 Integrated Microwave Corp. All Rights Reserved.

Product and product information are subject to change without notice.