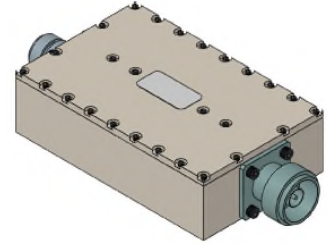


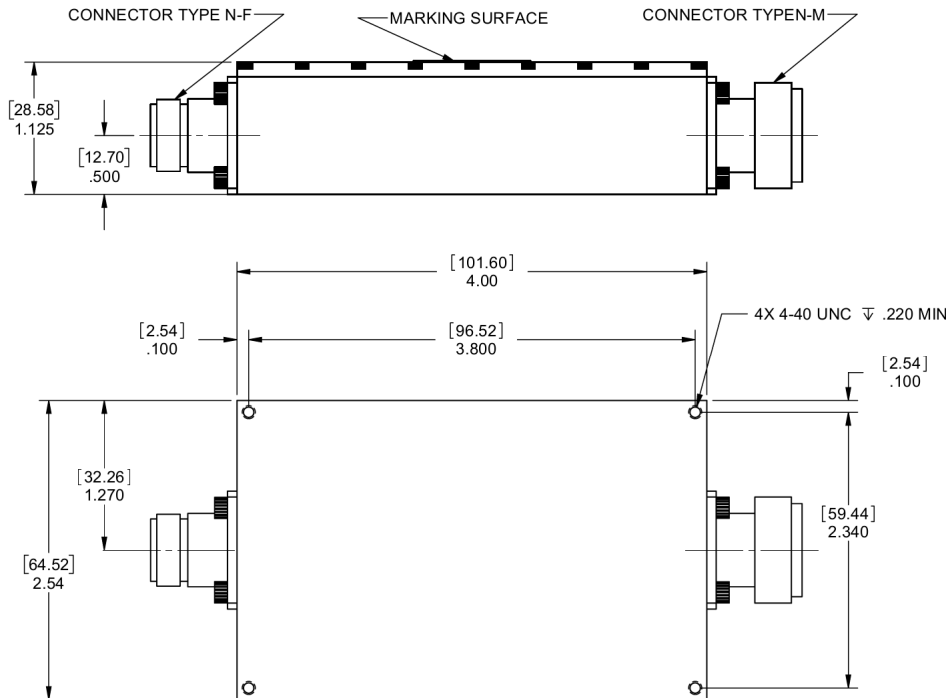
Ceramic Dualband Filter

Features/Benefits

- Ceramic Filter
- Type N-Female/Type N-Male Connectors
- Made in U.S.A.



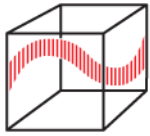
Parameter	Specification
Channel 1	
Center Frequency (Fo)	1227.6 MHz
Passband	2.0 dBa max from 1215.6 MHz to 1239.6 MHz
Return Loss	14 dB min from 1215.6 MHz to 1239.6 MHz
Channel 2	
Center Frequency (Fo)	1575.42 MHz
Passband	2.0 dBa max from 1563.42 MHz to 1587.42 MHz
Return Loss	14 dB min from 1563.42 MHz to 1587.42 MHz
Rejection	-50 dBc min @ 1187.6 MHz -50 dBc min @ 1267.6 MHz -50 dBc min @ 1535.4 MHz -50 dBc min @ 1615.4 MHz
Package Outline	IMC Document Number 623472
Temperature, Operating	-40°C to +85°C
Temperature, Storage	-55°C to +125°C
Mechanical Dimensions	4.00 x 2.54 x 1.125 inches [101.60 x 64.52 x 28.58 mm] (L X W X H)



UNLESS OTHERWISE SPECIFIED
DIMENSIONS ARE IN INCHES.
TOLERANCES ARE:

INCHES	MILLIMETERS
.XX ± .02	[X.X] ± .5
.XXX ± .010	[X.XX] ± .25
.XXXX ± .0020	[X.XXX] ± .051

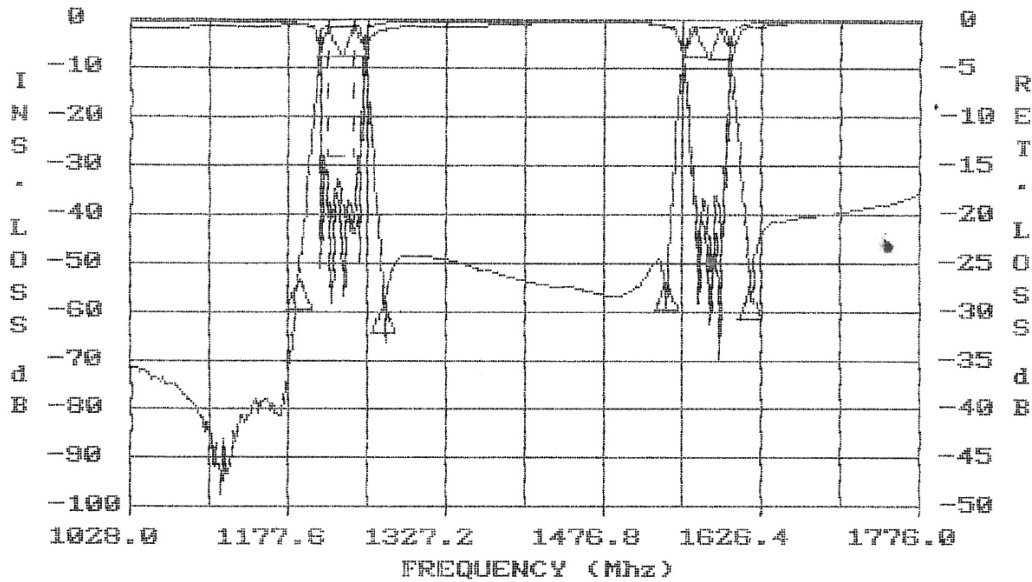
This document contains IMC proprietary information and is to be used only for the purposes for which it has been supplied and is not to be duplicated or disclosed in whole or in part without written permission from a duly authorized representative of IMC.



INTEGRATED MICROWAVE CO

IMC FSCM 60656

25 °C



IMC P/N 943582

REVISION

TESTED BY 9668

09-14-2019

09:58:03

S/N

FREQUENCY (MHZ)	VALUE	SPEC	COMMENTS
1187.6	-52.0 dbA	-50 dbA MIN	
1267.6	-59.3 dbA	-50 dbA MIN	
1535.4	-55.9 dbA	-50 dbA MIN	
1615.4	-55.7 dbA	-50 dbA MIN	
1215.6- 1239.6	-1.43 dbA	-2 dbA MAX	
1563.4- 1587.42	-1.82 dbA	-2 dbA MAX	

VALUE	SPEC	COMMENTS
40.44 MHZ	24 MHZ MIN	-3dbc Width
1227.59MHZ	1215.6 MIN	Center Freq.
1227.59MHZ	1239.6 MAX	Center Freq.

FREQUENCY (MHZ)	VALUE	SPEC	COMMENTS
1215.6- 1239.6	-17.6	-14 db MIN	(S11) - VSWR
1563.4- 1587.4	-20.7	-14 db MIN	(S11) - VSWR
1215.6- 1239.6	-16.5	-14 db MIN	(S22) - VSWR
1563.4- 1587.4	-18.1	-14 db MIN	(S22) - VSWR

This document contains IMC proprietary information and is to be used only for the purposes for which it has been supplied and is not to be duplicated or disclosed in whole or in part without written permission from a duly authorized representative of IMC.